

ISOLADORES SUSPENSOS

SH-1 & SH-2 – Isolador de Mola

NEW

- Patented Self Centering Cap
- Epoxy Powder Coated Bracket and Spring Coil

How the self centering no short cap works:

Indexed steps in spring cap correspond to standard washer diameters for the appropriate rod diameter. The washer and rod stay centered in the cap

Description

Kinetics Model SH Vibration Isolation Hangers are designed to reduce the transmission of vibration and noise produced by suspended equipment and piping. SH Hangers incorporate a high deflection color-coded spring element, a “no short” spring cap, and noise isolation pad, assembled into a stamped or welded hanger bracket. To assure stability, the spring element has a minimum lateral spring stiffness of 1.0 times the rated vertical stiffness. SH Hangers will allow a support rod misalignment through a 30° arc without short circuiting. Isolation brackets will carry a 500% overload without failure. Hangers are available in deflections from 1" to 2" (25 to 50 mm) and in capacities from 35 to 3,500 lbs. (16 to 1588 kg) for 1" and 35 to 3250 lbs. (16 to 1475 kg) for 2" deflection hangers. SH Hangers are effective in isolating vibration produced by low rpm equipment. Kinetics Model SH Hangers are recommended for the isolation of vibration produced by suspended mechanical equipment, in-line and exhaust fans, ductwork, piping, etc.

Application

Kinetics Model SH Hangers are recommended for use in isolating suspending sources of inaudible frequency vibration, located near critical vibration-free areas.

Suspended mechanical equipment such as in-line fans, cabinet fans, and piping and ductwork in close proximity to mechanical equipment are typical uses of Model SH hangers.

Standard Model SH hangers are shipped fully assembled and ready for installation in threaded metal rod suspension systems.

Model SH hangers are available in a wide range of load and static deflection selections, and can be provided with labor saving accessories for preloading, or provided with positioning plates for ease in erecting piping at a fixed elevation.

Specifications

Vibration isolators for suspended equipment, with minimum static deflection requirement exceeding 0.4" (10 mm), shall be hangers consisting of a free-standing, laterally stable steel spring and elastomeric washer in series, assembled in a stamped or welded steel bracket.

The bracket shall be finished with an epoxy-based powder coating. The manufacturer shall provide independent laboratory testing showing that the bracket with this finish has endured a minimum of 1,000 hours of exposure to salt spray fog testing per ASTM B117 without signs of corrosion.

The hanger bracket shall be designed to carry a 500% overload without failure and to allow a support rod misalignment through a 30° arc without metal-to-metal contact or other short circuit.

The isolation hanger shall incorporate spring caps with indexed steps which correspond to the washer diameter of the appropriately sized hanger rod to keep the rod centered in the spring cap and reduce rod misalignment. The spring caps are protected under U.S. patent number 5,653,426.

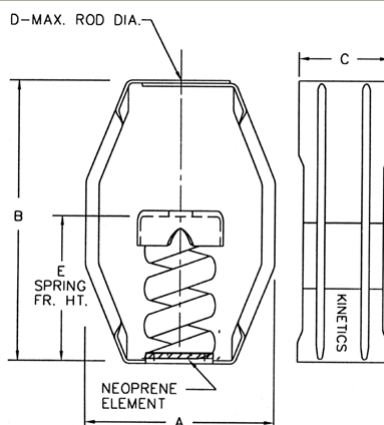
Springs shall have a minimum lateral stiffness of 1.0 times the rated vertical stiffness.

Springs shall be selected to provide operating static deflections shown on the Vibration Isolation Schedule or as indicated on the project documents. Springs shall be color coded or otherwise identified to indicate load capacity.

Vibration isolation hangers shall be Model SH, as manufactured by Kinetics Noise Control, Inc.

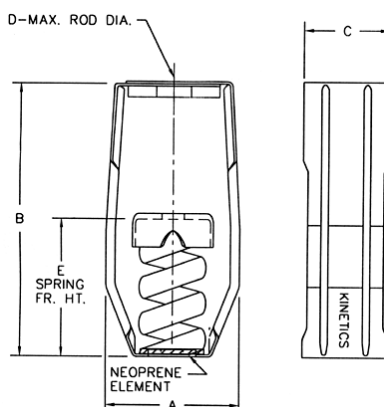


SH-1-35/805



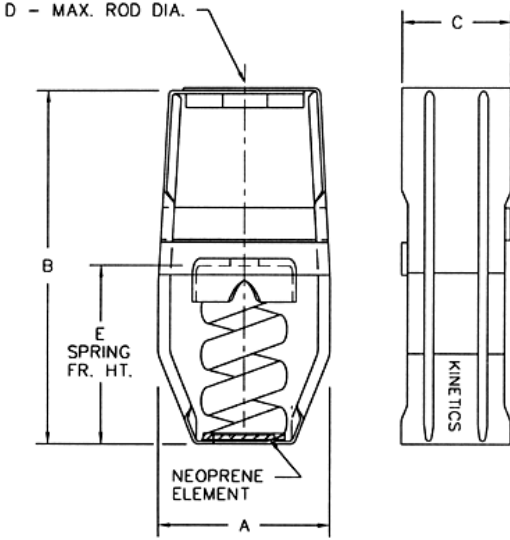
Spring Type	Spring Color	Rated Defl. in/mm	Rated Load lb/kg	A in/mm	B in/mm	C in/mm	D in/mm	E in/mm
SH-1-35	Blue	1.52/39	35/16	3.69/94	5.25/133	2.25/57	.50/13	3.00/75
SH-1-70	Green	1.36/35	70/32	3.69/94	5.25/133	2.25/57	.50/13	3.00/75
SH-1-125	Gray	1.18/30	120/55	3.69/94	5.25/133	2.25/57	.50/13	3.00/75
SH-1-245	Brown	1.07/27	220/100	3.69/94	5.25/133	2.25/57	.50/13	3.00/75
SH-1-370	Orange	1.00/25	370/165	3.69/94	5.25/133	2.25/57	.50/13	3.00/75
SH-1-500	Beige	1.00/25	500/225	3.69/94	5.25/133	2.25/57	.63/16	3.00/75
SH-1-600	Chrome	1.00/25	600/275	3.69/94	5.25/133	2.25/57	.63/16	3.00/75
SH-1-700	Beige/White	1.00/25	700/315	3.69/94	5.25/133	2.25/57	.63/16	3.00/75
SH-1-805	Chrome/White	1.00/25	805/365	3.69/94	5.25/133	2.25/57	.63/16	3.00/75

SH-1-250/1000



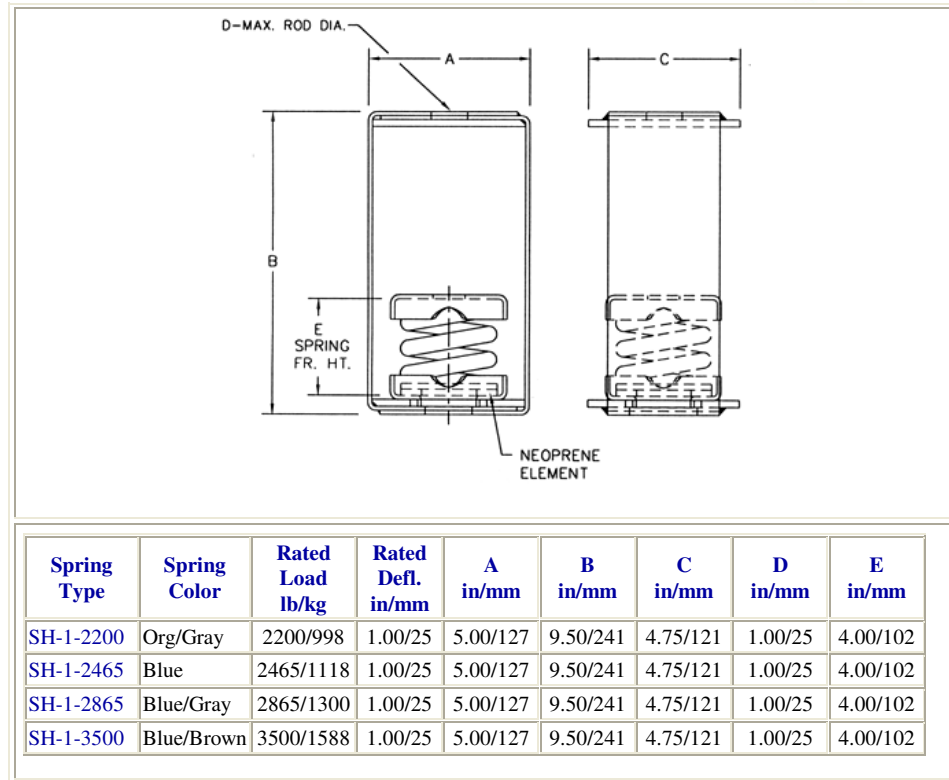
Spring Type	Spring Color	Rated Defl. in/mm	Rated Load lb/kg	A in/mm	B in/mm	C in/mm	D in/mm	E in/mm
SH-1-250	Blue	1.79/45	250/114	5.58/142	8.59/218	3.63/92	1.00/25	4.00/100
SH-1-450	Green	1.54/39	450/205	5.58/142	8.59/218	3.63/92	1.00/25	4.00/100
SH-1-625	Black	1.44/37	625/284	5.58/142	8.59/218	3.63/92	1.00/25	4.00/100
SH-1-800	Gray	1.31/33	800/364	5.58/142	8.59/218	3.63/92	1.00/25	4.00/100
SH-1-1000	Red	1.15/29	1000/455	5.58/142	8.59/218	3.63/92	1.00/25	4.00/100

SH-1-1250/1700

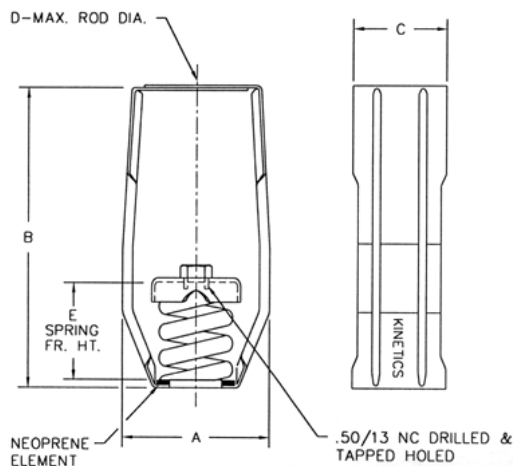


Spring Type	Spring Color	Rated Load lb/kg	Rated Defl. in/mm	A in/mm	B in/mm	C in/mm	D in/mm	E in/mm
SH-1-1250	Brown	1250/568	1.09/28	5.58/142	8.59/218	3.63/92	1.00/25	4.00/100
SH-1-1700	Orange	1700/773	1.00/25	5.58/142	8.59/218	3.63/92	1.00/25	4.00/100

SH-1-2200/3500

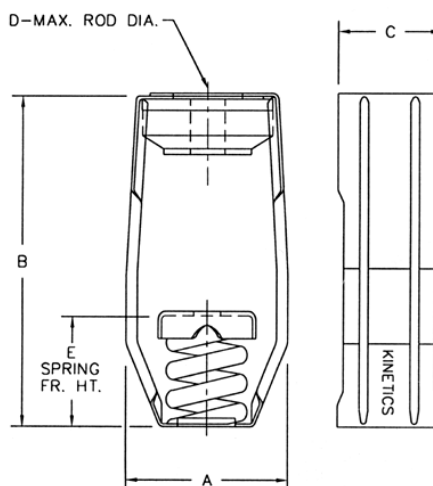


SH-2-35/220



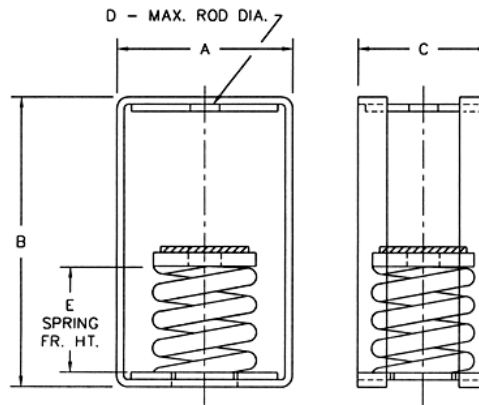
Spring Type	Spring Color	Rated Load lb/kg	Rated Defl. in/mm	A in/mm	B in/mm	C in/mm	D in/mm	E in/mm
SH-2-35	Blue	35/16	2.00/50	3.69/94	7.38/187	2.25/57	.50/13	4.38/111
SH-2-70	Green	70/32	2.00/50	3.69/94	7.38/187	2.25/57	.50/13	4.38/111
SH-2-120	Gray	120/55	2.00/50	3.69/94	7.38/187	2.25/57	.50/13	4.38/111
SH-2-220	Brown	220/100	2.00/50	3.69/94	7.38/187	2.25/57	.50/13	4.38/111

SH-2-260/1200



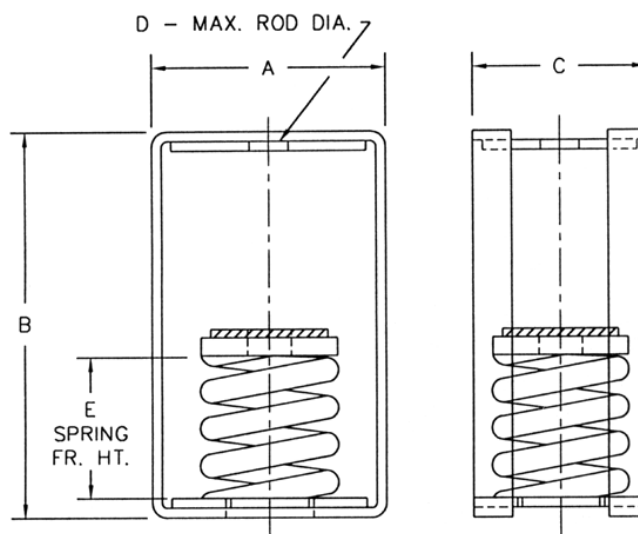
Spring Type	Spring Color	Rated Load lb/kg	Rated Defl. in/mm	A in/mm	B in/mm	C in/mm	D in/mm	E in/mm
SH-2-260	Blue	260/118	2.14/54	5.58/142	8.59/218	3.63/92	.88/22	4.00/100
SH-2-465	Green	465/211	2.00/50	5.58/142	8.59/218	3.63/92	.88/22	4.00/100
SH-2-720	Black	720/328	2.00/50	5.58/142	8.59/218	3.63/92	.88/22	4.00/100
SH-2-850	White	850/386	2.03/52	5.58/142	8.59/218	3.63/92	.88/22	4.25/108
SH-2-1025	Beige	1025/466	2.00/50	5.58/142	8.59/218	3.63/92	.88/22	4.25/108
SH-2-1200	Chrome	1200/546	2.03/52	5.58/142	8.59/218	3.63/92	.88/22	4.50/114

SH-2-2000/2500



Spring Type	Spring Color	Rated Defl. in/mm	A in/mm	B in/mm	C in/mm	D in/mm	E in/mm
SH-1-2000	Orange	2.00/50	6.00/152	12.00/305	6.00/152	1.00/26	7.00/178
SH-1-2500	Blue	2.00/50	6.00/152	12.00/305	6.00/152	1.00/26	7.00/178

SH-2-2750/3250



Spring Type	Spring Color	Rated Load lbs/kg	Rated Defl. in/mm	A in/mm	B in/mm	C in/mm	D in/mm	E in/mm
SH-1-2750	Blu/Blu	2750/1245	2.00/51	6.00/152	12.00/305	6.00/152	1.00/25	7.00/178
SH-1-3025	Blu/Grn	3025/1375	2.00/51	6.00/152	12.00/305	6.00/152	1.00/25	7.00/178
SH-1-3250	Blu/Blk	3250/1475	2.00/51	6.00/152	12.00/305	6.00/152	1.00/25	7.00/178



Kinetics Noise Control, Inc. is continually upgrading the quality of our products. We reserve the right to make changes to this and all products without notice.

